

THE GROUP COMPANY

EURO-LOCKS and LOWE & FLETCHER



KOODILUKKO A152





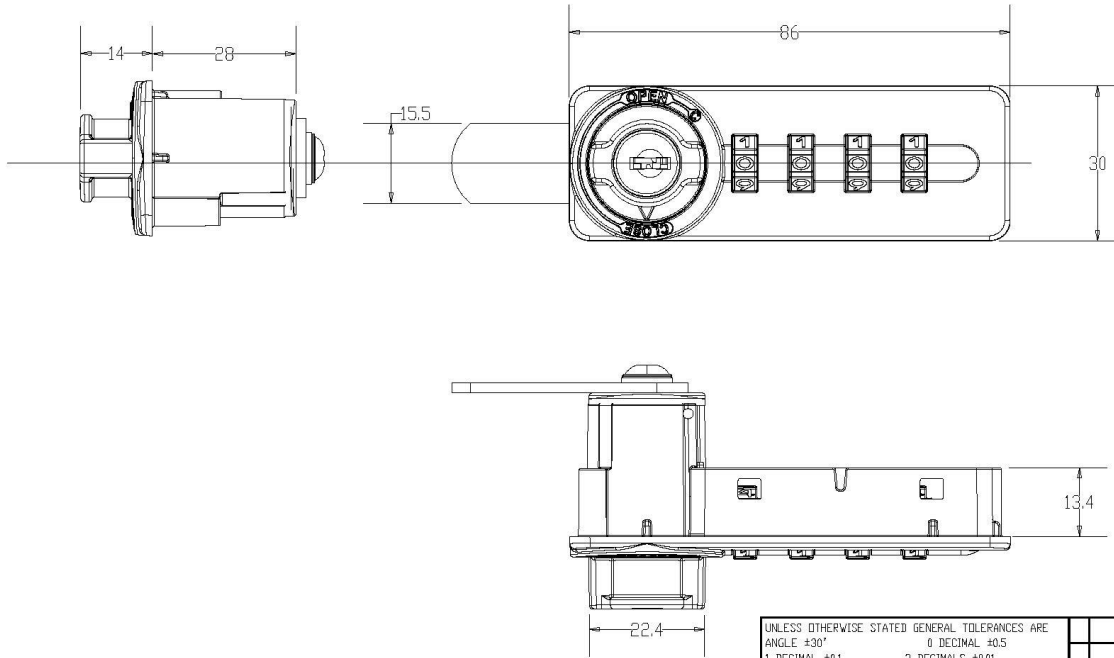
A152 koodilukon ominaisuuksia:


- Automaattinen koodin sekoitus, avaava koodi ei jää näkyviin.
- Avaavan koodin löytäminen yleisavaimella
- Lukon avaaminen yleisavaimella
- 10.000 koodivaihtoehtoa
- Vaihtoehdot oikea- ja vasenkätisiin oviin
- Värit musta ja hopea
- Upotettava ja pinta-asennus
- Ovivahvuuksille 0.5mm - 22mm
- Teljen kiinnitysreikä nro.7
- Samakki lukkorunko ja vääntönuppi
- Telkivahvuudet 2.0mm, 2.5mm ja 3.0 mm
- Vain sisäkäyttöön (ei IP-suojasta)
- Lukon kiinnitys 2 x M3 ruuveilla
- Lukon maksimi akselikuorma 30 kg
- Telki salvattu lukon olessa kiinniasennossa

THE GROUP COMPANY EURO-LOCKS and LOWE & FLETCHER



A152

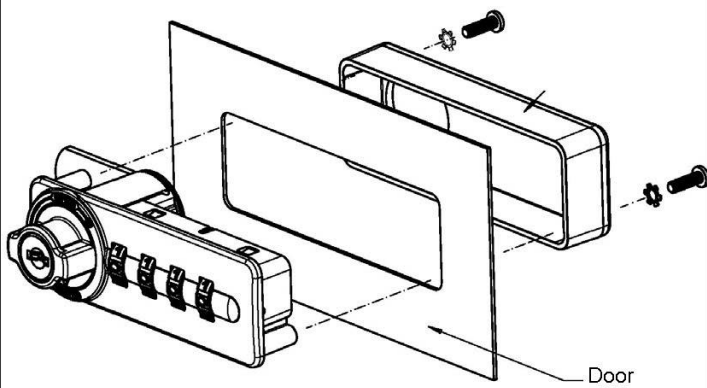
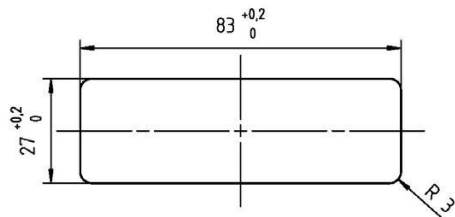


| | | | | |
|--|-------------|--|---------------|-----------|
| UNLESS OTHERWISE STATED GENERAL TOLERANCES ARE | | | | |
| ANGLE $\pm 30''$ | | 0 DECIMAL ± 0.5 | | |
| 1 DECIMAL ± 0.1 | | 2 DECIMALS ± 0.01 | | |
| SCALE | 1/1 | | | |
| MATERIAL | | | | |
| FINISHING | | N° | MODIFICATIONS | DEC. DATE |
| TIT | | | | |
| EXECUTED BY | SCHORUNG P. | Date | 30.06.10 | |
| VERIFIED BY | FELL B. | Date | 16.07.10 | |
| COMBINATION LOCK | |  EURO-LOCKS SULZBACH | | |
| N° A152 Page 1 of 1 | | THIS DRAWING IS THE PROPERTY OF EURO-LOCKS AND CAN NOT BE USED WITHOUT PRIOR PERMISSION OF THE OWNER | | |

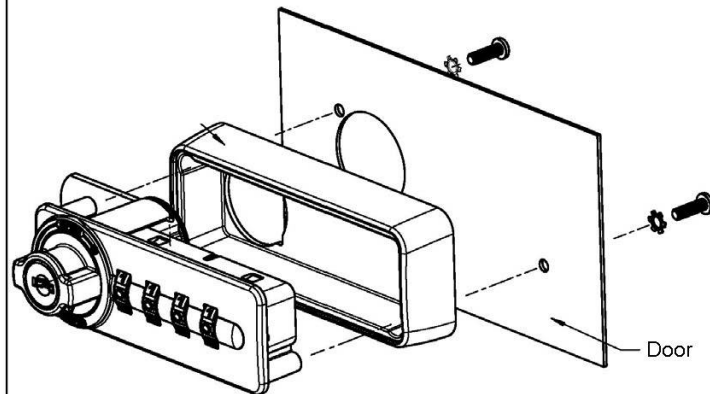
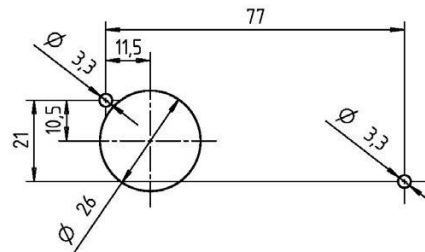


Asennusreijät uppo- ja pinta- asennukselle

Piercing hole for Built-In Mounting



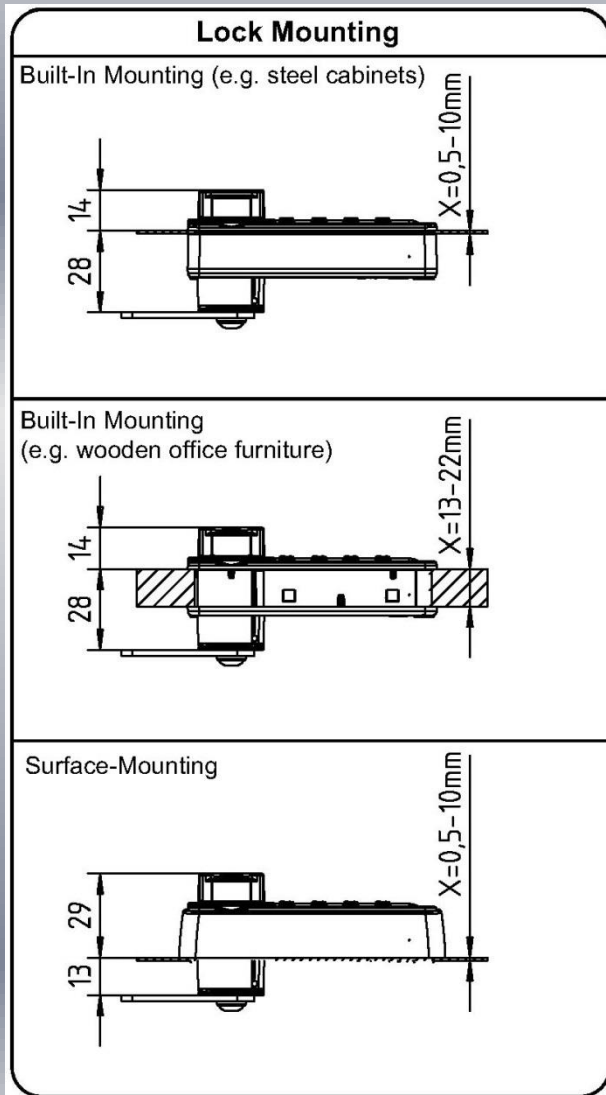
Piercing hole for Surface Mounting





Ovivahvuudet

3 erilaista asennushelaa (PA6 30% GF, musta)



Uppoasennus

Ovivahvuuksille 0,5mm - 10mm

Käytä asennushelaa **A4173**

Uppoasennus

Ovivahvuuksille 13mm - 22mm

Käytä asennushelaa **A4172**

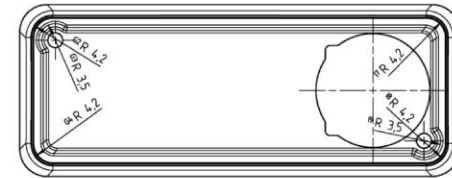
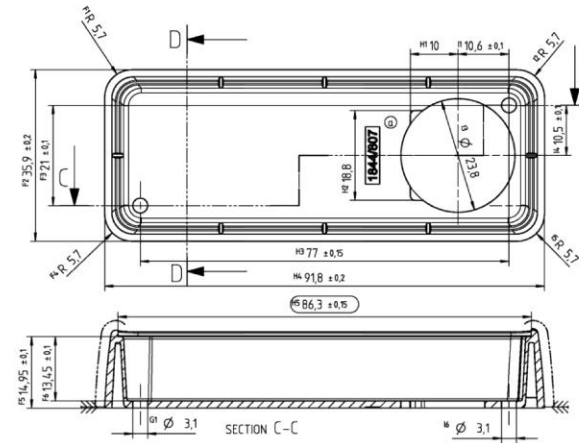
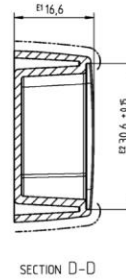
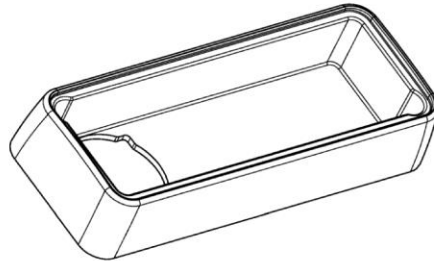
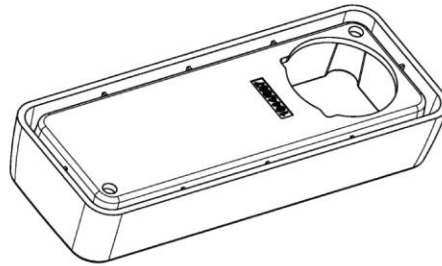
Pinta-asennus

Ovivahvuuksille 0,5mm - 10mm

Käytä asennushelaa **A4174**



A4174



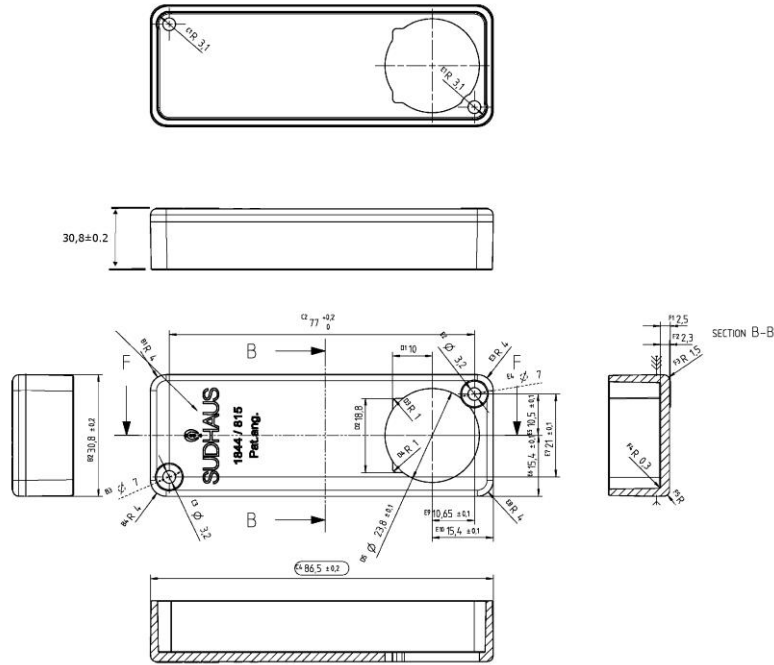
**GEMÄß SUDHAUS-ZEICHNUNG
1844-40 INDEX A (15.09.09)**

| | | | | | | | | |
|---|---------------|-------------|----------|---|-----|-------|-------|--|
| für untolerierte Maße gilt: | | Winkel ±30° | | 5 | | | | |
| 0 Dezimalstellen ±0,5 mm | | | | 4 | | | | |
| 1 Dezimalstelle ±0,1 mm | | | | 3 | | | | |
| 2 Dezimalstellen ±0,01 | | | | 2 | | | | |
| Maßstab | ca. 1:1 | | 3 | | | | | |
| Werkstoff | PA6 30%GF | | 2 | | | | | |
| Oberflächen- behandlung | Schwarz/Black | | 1 | | | | | |
| Wärme- behandlung | | | Nr. | Änderung | von | Datum | gepr. | |
| Erstellt | PS | am | 14.07.10 | | | | | |
| Geprüft | BF | am | 16.07.10 | | | | | |
| UNTERPLATTE / SURFACE MOUNTING PLATE | | | | EURO-LOCKS SULZBACH/SAAR | | | | |
| A4174 | | | | Diese Zeichnung ist alleiniges Eigentum der Firma EURO-LOCKS und darf nicht in einer Weise verwendet werden, die sich gegen deren Interessen richtet. | | | | |

THE GROUP COMPANY EURO-LOCKS and LOWE & FLETCHER



A4173



SECTION F-F

FÜR MATERIALSTÄRKEN VON 0.5 BIS 10mm /
FOR MATERIAL THICKNESS OF 0.5 TO 10mm

GEMÄß SUDHAUS-ZEICHNUNG /
ACCORDING TO SUDHAUS DRAWING
1844-32-42 INDEX C (02.03.10)

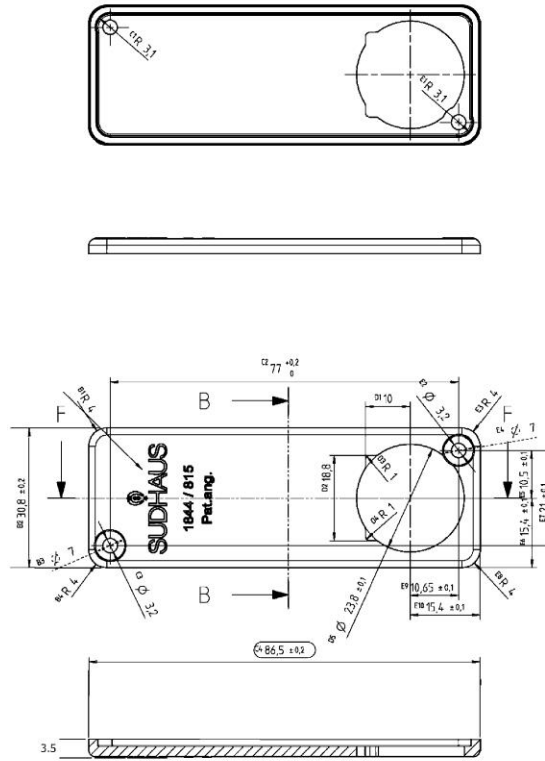
AUSFÜHRUNG 815

| | | | | | | | | | |
|---|---------------|-------------|----------|--|----------|-----|-------|-------|--|
| Für untolerierete Maße gilt: 0 Dezimalstellen ±0,5 mm 1 Dezimalstelle ±0,1 mm 2 Dezimalstellen ±0,01 | | Winkel ±30° | | | | | | | |
| Maßstab | Ca. 1:1 | | | | | | | | |
| Werkstoff | PA6 30%GF | | | | | | | | |
| Oberflächen- behandlung | Schwarz/Black | | | | | | | | |
| Wärme- behandlung | | | | Nr. | Änderung | von | Datum | gepr. | |
| erstellt | PS | am | 15.07.10 | | | | | | |
| geprüft | BF | am | 16.07.10 | | | | | | |
| HINTERPLATTE / BACK COVER | | | | EURO-LOCKS | | | | | |
| A4173 | | | | Sulzbach/Saar | | | | | |
| | | | | Diese Zeichnung ist alleiniges Eigentum der Firma EURO-LOCKS und darf nicht in einer Weise verwendet werden, die sich gegen deren Interessen richtet. | | | | | |

THE GROUP COMPANY EURO-LOCKS and LOWE & FLETCHER



A4172



SECTION F-F

**FÜR MATERIALSTÄRKEN VON 13 BIS 22mm /
FOR PANEL THICKNESS FROM 13 TO 22mm**

**GEMÄß SUDHAUS-ZEICHNUNG /
ACCORDING TO SUDHAUS DRAWING
1844-32-42 INDEX C (02.03.10)**

AUSFÜHRUNG 802

| | | | | | | | | | |
|---|-----------|-------------|--|----------|-----|-------|-------|--|--|
| Für untolerante Maße gilt: 0 Dezimalstellen ±0,5 mm 1 Dezimalstelle ±0,1 mm 2 Dezimalstellen ±0,01 | | Winkel ±30° | | | | | | | |
| Maßstab | ca. 1:1 | | | | | | | | |
| Werkstoff | PA6 30%GF | | | | | | | | |
| Oberflächen- behandlung | Schwarz | | | | | | | | |
| Wärme- behandlung | | | Nr. | Änderung | vom | Datum | gepr. | | |
| erstellt | PS | am | 15.07.10 | | | | | | |
| geprüft | BF | am | 16.07.10 | | | | | | |
| HINTERPLATTE SCHMAL / BACK PLATE THIN | | | EURO-LOCKS Sulzbach/Saar | | | | | | |
| A4172 | | | Diese Zeichnung ist alleiniges Eigentum der Firma EURO-LOCKS und darf nicht in einer Weise verwendet werden, die sich gegen deren Interessen richtet. | | | | | | |

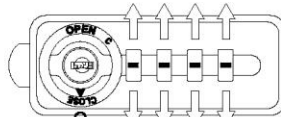


OPERATING INSTRUCTIONS COMBINATION LOCK A152

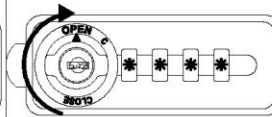


- ON DELIVERY, LOCK IS FACTORY SET TO THE DEFAULT CODE 3 3 3 3. FOR SAFETY REASONS SET LOCK IMMEDIATELY TO YOUR OWN PERSONAL CODE (SEE POINT 2 BELOW).
- DO NOT LUBRICATE LOCK AND CODE WHEELS.
- MAKE SURE THAT CAM MOVES FREELY WHILE OPERATING THE LOCK.
- LOCK OPERABLE WITHIN A TEMPERATURE RANGE OF 0°C TO 50°C (32°F TO 120°F).
- DO NOT EXPOSE LOCK TO ENVIRONMENTAL INFLUENCES (MOISTURE, FIRE, DUST, ETC.).
- CLEAN LOCK WITH A DAMP CLOTH: DO NOT USE CHEMICAL PRODUCTS.
- DO NOT INSERT FOREIGN OBJECTS IN THE CODE WHEELS.

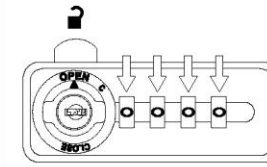
1



ENTER DEFAULT CODE (3 3 3 3) OR PERSONAL CODE(****)

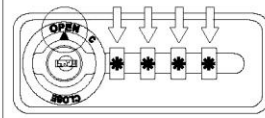


TO OPEN THE LOCK, TURN KNOB TO "OPEN".

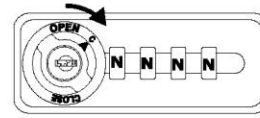


FOR SAFETY REASONS, CODE WHEEL TURN AUTOMATICALLY BACK TO "0 0 0 0"

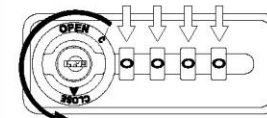
2



IN OPEN POSITION ENTER PERSONAL CODE (IF SET) OR DEFAULT CODE



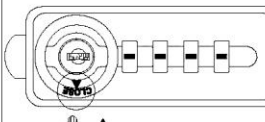
1. TURN KNOB TO "C"
2. ENTER NEW CODE "N N N N"



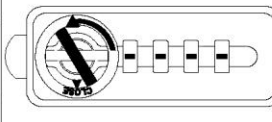
TURN KNOB BACK TO "CLOSE".
NEW CODE IS SET!

3

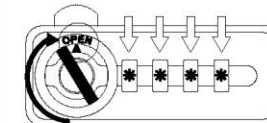
EMERGENCY
OPENING
/
CODE
FINDING



INSERT KEY INTO BARREL



TURN KEY TO THE LEFT



TURN KNOB TO THE RIGHT ON "OPEN".
CODE IS SET AUTOMATICALLY!

EURO-LOCKS SICHERHEITSEINRICHTUNGEN GMBH
AM BRUCHWALD 22, D-66280 SULZBACH/NEUWEILER
TEL: +49-(0)6897-9072-0 FAX: +49-(0)6897-9072-99
WEB: WWW.EURO-LOCKS.EU MAIL: VERTRIEB@EURO-LOCKS.DE